

## How?

### ► The Cross-Disciplinary Approach is ensured by:

- A partnership between **4** renowned higher education institutions:



Veterinary public health, health and animal farming, food safety



UN/UA: Food and health, public health



ESA: Agrofood, agriculture and sustainable system conception engineering

- Interdisciplinary teaching built on **5** Teaching Units (see detailed diagram of the 1<sup>st</sup> semester).

### ► The Multicultural Approach is ensured by:

- The recruitment of students from **all over the world**
- The lectures taught entirely in **English**



### ► The practice training to professionalise students is guaranteed by:

- **Practical Tutored Projects** in relation to the professional world
- A 5 month **internship** previously defined by the student and professors according to the student's precise professional project
- **An active and customised pedagogy** relying on the use of audiovisual and multimedia technologies in teaching
- **Courses taught by experts:** Doctors, Veterinarians, Food-processing Engineers, Researchers, Experts, and Industrialists...



## How to apply ?

### ► Admission criteria

To apply for the Master's degree, students **must**:

- Hold a Bachelors' degree
- Have completed at least one year of postgraduate studies (60 ECTS) in:
  - Pharmaceutical or biological sciences
  - Medical studies
  - Veterinary studies
  - Food-processing or agricultural engineering

## Application session will open:

**the 15<sup>th</sup> January 2020**  
for the 2020-2021 academic year

Please write to  
[contact.manimal@oniris-nantes.fr](mailto:contact.manimal@oniris-nantes.fr)

[www.man-imal.fr](http://www.man-imal.fr)

[www.facebook.com/MANIMALprogram](https://www.facebook.com/MANIMALprogram)

This programme is supported by the French government via the French National Research Agency, under convention ANR-11-IDFI-0003

next  
HEALTH AND  
ENGINEERING



Innovative graduate curriculum based on the "One World, One Health" concept promoted by the WHO, FAO and OIE

## Master's Degree

**From Animal to man:**  
Analysing and Managing Health and Food Risks



In partnership with



Programme lauréat des Initiatives D'Excellence en Formations Innovantes (IDEFI) du Grand Emprunt français

## Why?

Because in a globalised, industrialised society with an increasing number of stakeholders and regulations, production chains are becoming more and more complex.

Based on the "One World, One Health" concept, the **man-imal** programme seeks to answer these changes thanks to a global and cross-disciplinary approach integrating:



To cope with these new issues on Public Health and Food Safety, the Master's degree "From Animal to Man: Analysing and Managing Health and Food Risks" trains executives to new job profiles.

## For who?

This course trains students from various fields:



Medicine  
Pharmacy



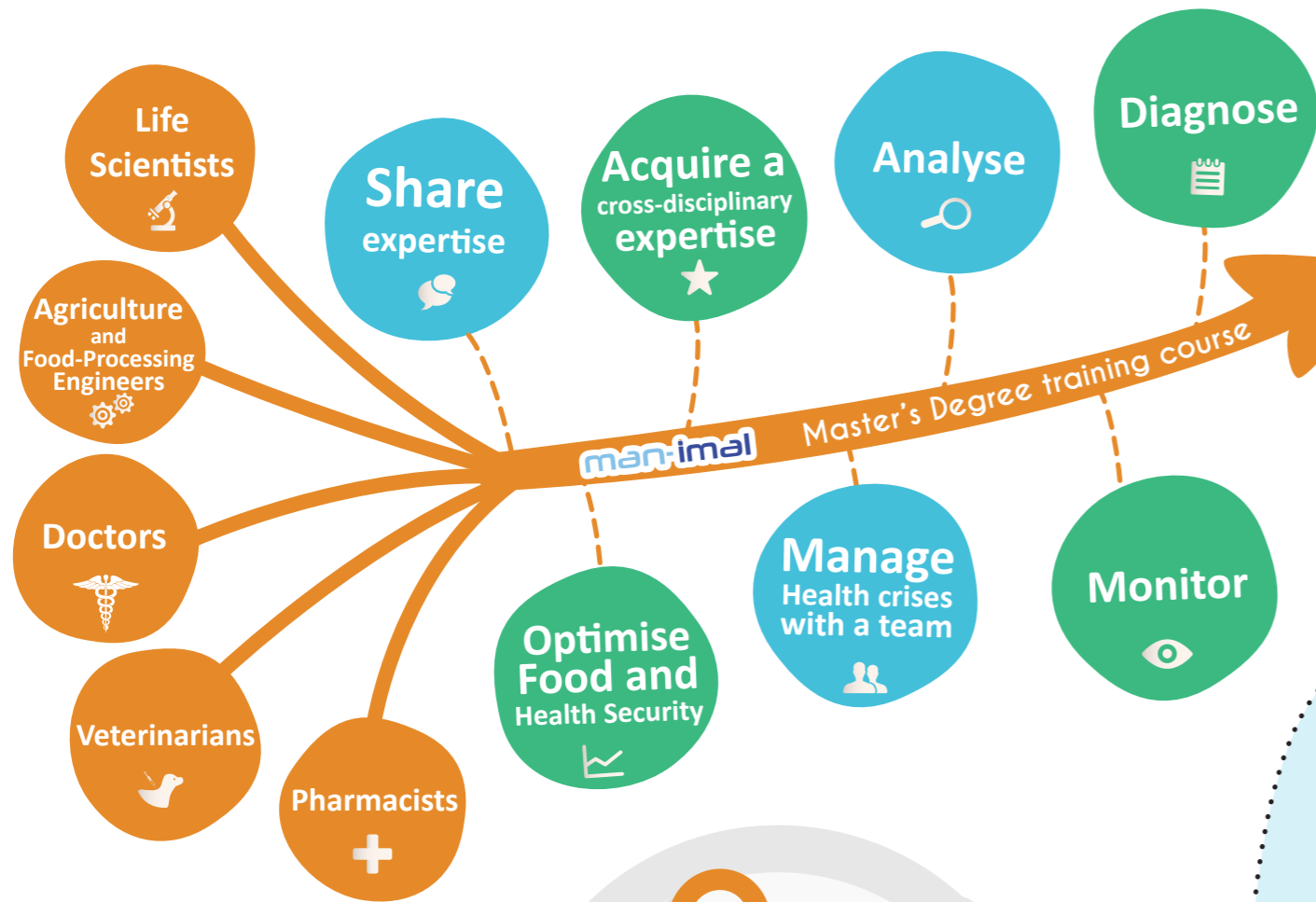
Veterinary sciences



Life sciences



Agricultural or  
Food-Processing  
Engineering



## Job openings

- Private sector / Public sector**
- ▶ **Consultants and experts** for the Ministry of Health, health risk assessment agencies in France and in Europe, within food-processing and pharmaceutical companies, research and development offices...
  - ▶ **Senior Level Scientist** for the assessment and expertise of Health and Food Risks, within agricultural organisations, association of farmers, for national and international public and parapublic health organisations, or institutions taking part in Public Health Risk Assessment (EFSA, Anses, InVS, OIE, FAO...)...
  - ▶ **Researchers** in the field of Zoonosis, Human Nutrition, Animal and Human Health, R&D directors...

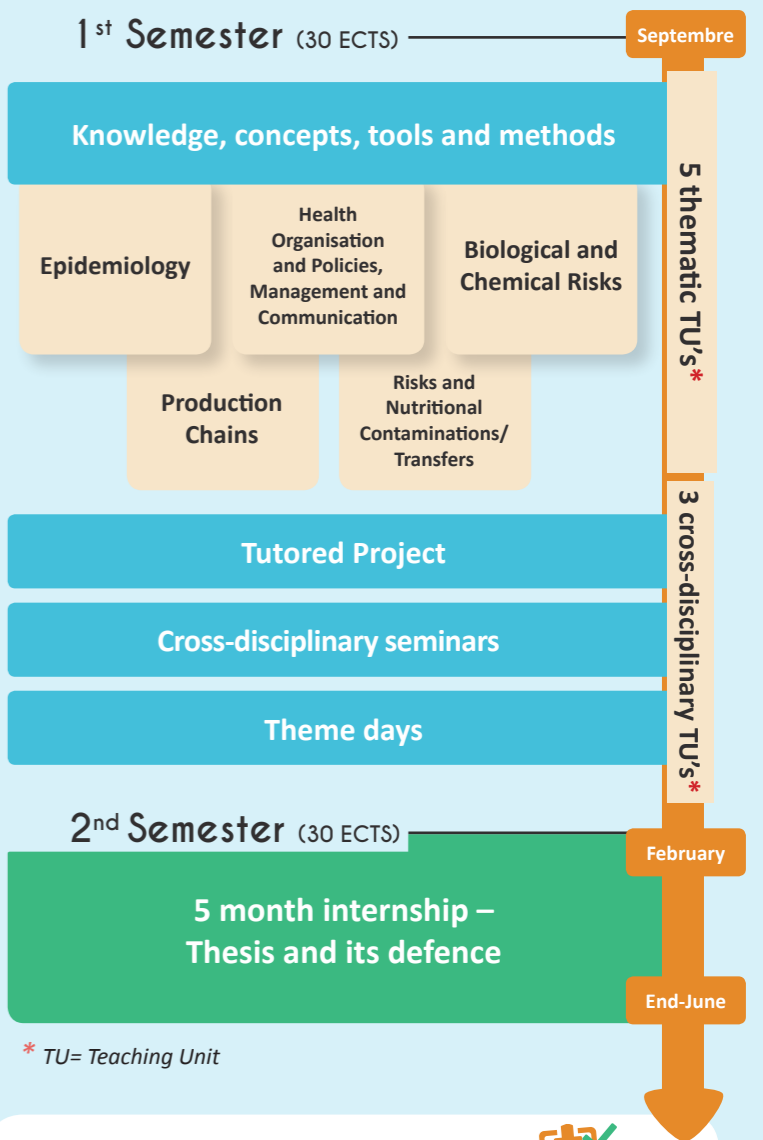
## Organisation of the training programme

The **first semester** is dedicated to acquiring theoretical knowledge, tools and methods. Cross-disciplinary courses are provided to develop:

- The ability to work as a multidisciplinary team
- Skills to identify the complementary partners required for case solving

During the **second semester**, students do an internship, whose subject is directly related to the **man-imal** themes, **in a professional environment, in France or abroad.**

This internship leads to the completion and defence of a Master's thesis.



- ### Evaluation methods
- **Ongoing evaluations :**
    - Individual: contribution and foundational knowledge
    - Group: case scenario group work and tutored project
  - **Internship evaluation :** completion and defense of a thesis.